

CASE STUDY

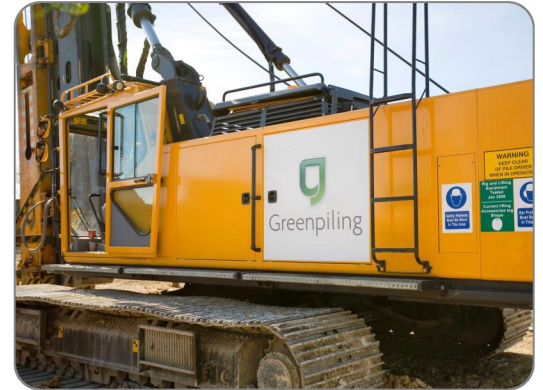
Cyprium Development Swansea Waterfront



Greenpiling

PROJECT OVERVIEW:

| | |
|------------------------------|---|
| Client: | Terrace Hill Group PLC |
| Sub-contracted to: | Interserve |
| Engineer | Clark Bond Structures Ltd |
| Sector: | Commercial |
| Value: | £55k |
| Description of Works: | Installation of piles to form part of foundations for Cyprium extension |



TECHNICAL DETAILS:

| | |
|-------------------------------|---|
| Type of Piling System: | Steel Tubular |
| Soil Conditions: | Made Ground/Sand and Gravel/ Siltstone |
| Max Load kN: | Up to 1000kN |
| Length of piles: | 12m - 16m |
| Type of testing: | Dynamic |
| No of piles installed: | 98 No. |
| Diameter of piles: | 244mm |



Green Piling undertook the installation of reclaimed steel tube piling for an extension to the Cyprium office building on the exclusive Swansea Waterfront development.

The initial first phase building was constructed on lightly reinforced segmental precast concrete piles; however, due to problems with pile positional tolerances and cobble and boulder obstructions, for the phase 2 extension, Interserve decided to employ Green Piling to install steel tubular piles, to ensure certainty of cost and programme. Extra care was taken throughout the project due to the close proximity of the existing building.

