

**CASE STUDY**  
**Residential Development**  
**Prescot Street - Liverpool**



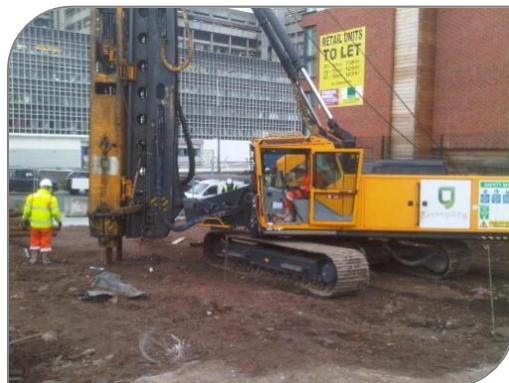
**PROJECT OVERVIEW:**

**Client:** Parkmoor Group  
**Sub-contracted to:** Pochin Construction Ltd  
**Engineer:** Sutcliffe Associates  
**Sector:** Residential  
**Value:** £25k  
**Description of Works:** Design, supply and install piles to form foundations for the new infill block.



**TECHNICAL DETAILS:**

**Type of Piling System:** Steel Tubular Piles  
**Soil Conditions:** Made Ground/Sandstone  
**Length of piles:** Up to 5 - 10m  
**Type of Testing:** Dynamic (CAPWAP)  
**No. of piles installed:** 50 No.  
**Diameter of piles:** 140/177mm



Unforeseen ground conditions were encountered by the Main Contractor whilst digging the conventional pad foundations.

It was anticipated that shallow Sandstone existed across the footprint of the building as indicated in the limited site investigation undertaken. However it transpired that the Sandstone had been quarried to a significant depth adjacent to the existing recently completed and occupied student accommodation.

A number of piling systems were considered however based on the variable depth to rock head, presence of obstructions and tight programme requirements, steel tubular piles were selected as the most suitable.

Initial concerns over noise and vibration were allayed with information we were able to provide from previous projects completed in sensitive locations.

Monitoring of vibration levels was undertaken on the boundary for record purposes.

Piling and testing was completed within a 3 day period on site.

