

CASE STUDY

The Range Various Locations



PROJECT OVERVIEW:

Client: The Range

Sub-contracted to: CDS Group Services

Sector: Commercial

Total Value: £109k

Description of Works: Design, construct and install piles to form part of the foundations for a mezzanine within retail units.



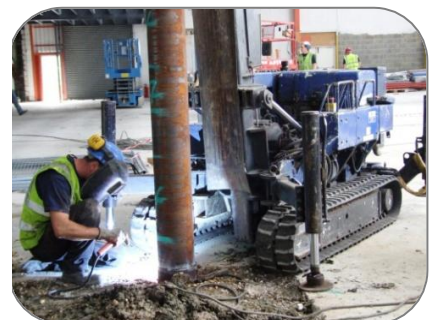
Location:	Lakeside, West Thurrock
Piling system:	Mini – Steel Tubes
Diameter of pile:	220mm
Length of pile:	5m
Max kN:	225
No. of piles	14



Location:	Weston Super Mare
Piling system:	Mini – Steel Tubes
Diameter of pile:	220mm
Length of pile:	17m
Max kN:	225
No. of piles:	20
Additional Information	2 rigs required due to tight deadline to store opening day before Christmas 2010



Location:	Stevenage
Piling system:	Mini – Steel Tubes
Diameter of pile:	220mm
Length of pile:	10m
Max kN:	225
No. of piles	24
Additional Information	Due to the near surface clay, pre-boring was required to prevent obstruction.



Location:	Weston Super Mare 2
Piling system:	Pre-cast Concrete
Diameter of pile:	225mm square
Length of pile:	20m
Max kN:	40
No. of piles	28