

# Klemm KR 709-2

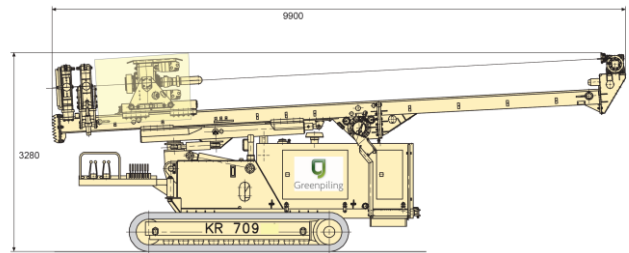
## Rig Information Sheet



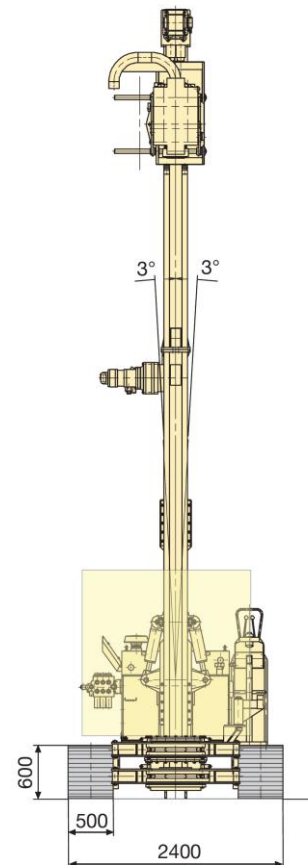
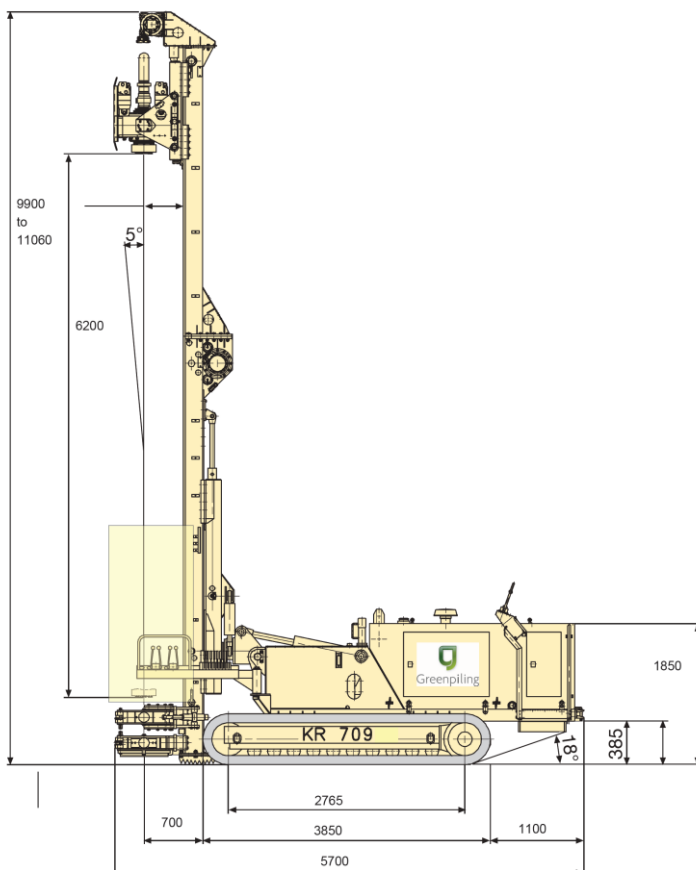
### Technical Data

Specification		
Max drilling diameter	mm	508
Max clamping diameter	mm	508
Max pullback force	kN	130
Max Stroke	mm	6200
Nominal torque	kNm	32
Maximum retraction speed	m/min	6.2
Weight and Dimensions		
Transport width	mm	2400
Transport height	mm	3280
Operating height	mm	9900-11060
Gross weight	tonne	13.5
Overall length	mm	5700
Track shoe width	mm	500
Overall width	mm	2600
Typical Noise Level at 1m	dBa	111
Ground pressure	kPa	70

### Transport Condition



### Working Condition



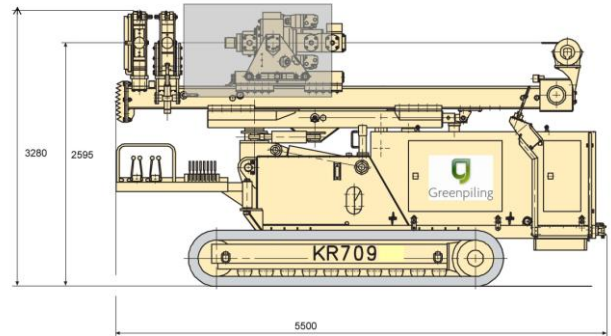
**Klemm KR 709-2**  
**Rig Information Sheet**  
**Restricted**



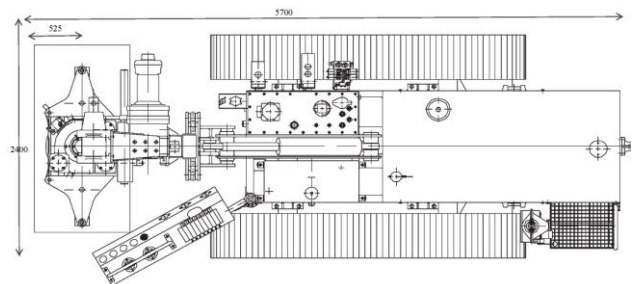
**Technical Data**

Specification		
Max drilling diameter	mm	508
Max clamping diameter	mm	508
Max pullback force	kN	130
Max Stroke	mm	1800-2950
Nominal torque	kNm	32
Maximum retraction speed	m/min	6.2
Weight and Dimensions		
Transport width	mm	2400
Transport height	mm	3280
Operating height	mm	5500-6660
Gross weight	tonne	13.2
Overall length	mm	5700
Track shoe width	mm	500
Overall width	mm	2600
Typical Noise Level at 1m	dBa	111
Ground pressure	kPa	48

**Transport Condition**



**Plan**



**Working Condition**

