

CASE STUDY
The Range
Various Locations



PROJECT OVERVIEW:

Client: The Range
Sub-contracted to: CDS Group Services
Engineer: Rushby Brewster
Sector: Commercial
Total Value: £71k
Description of Works: Design, construct and install piles to form part of the foundations for a mezzanine within retail units.



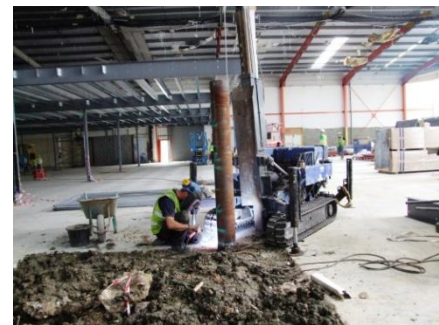
TECHNICAL DETAILS:

Type of Piling System: Mini Piling – Steel Tubular
Max Load kN: 225kN
Type of Testing: Not required
Diameter of piles: 220mm



PROJECT DETAILS:

Location:	Lakeside, West Thurrock
Length of pile:	5m
No. of piles	14



Location:	Weston Super Mare
Length of pile:	17m
No. of piles	20
Additional Information	2 rigs required due to tight deadline to store opening day before Christmas 2010

Location:	Stevenage
Length of pile:	10m
No. of piles	24
Additional Information	Due to the near surface clay, pre-boring was required to prevent obstruction.

